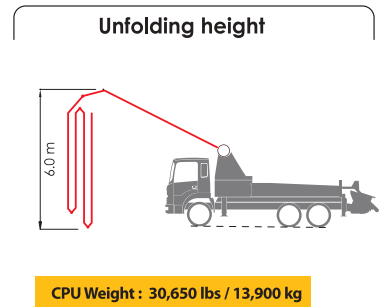
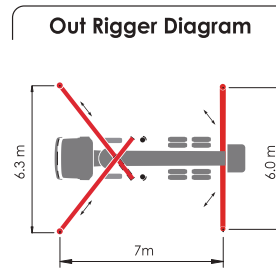
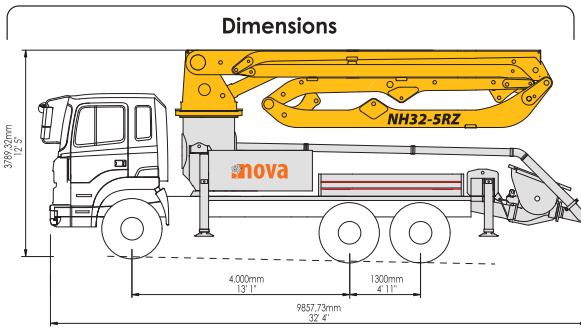


# MODEL NH32-5RZ

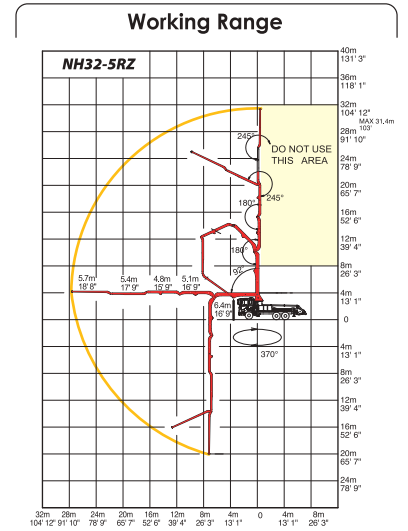


### Boom Specification

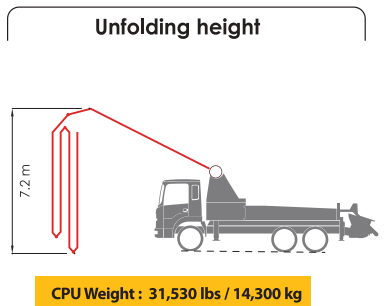
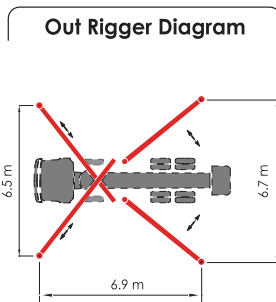
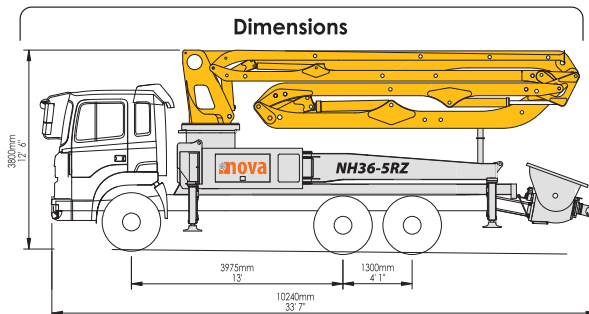
Spec	U.S.	Metric
Number of Booms	5 Sections	
Folding Type	RZ Folding	
Vertical Reach	103'	31.4 m
Horizontal Reach	89' 3"	27.2 m
Reach Depth	65' 7"	20.0 m
Unfolding Height	19' 8"	6.0 m
Section Articulation	92°/180°/180°/245°/245°	
Rotation	370°	
Delivery Line	5"	125 mm
Proportional Boom	Yes	
End Hose Length	13' 2"	4.0 m
Out Rigger Spread - Front	20' 8"	6.3 m
Out Rigger Spread - Rear	19' 8"	6.0 m

### Pump Specification

Spec	U.S.	Metric
Maximum Output	209.3 yd <sup>3</sup> /h	160 m <sup>3</sup> /h
Concrete Pressure	1015 psi	70 bar
Stroke Per Min.	30	
Delivery Cylinder	Ø 9"	Ø 230
Stroke Length	6' 10"	2100 mm
S-Valve	Ø8" x Ø7"	Ø200 x Ø180 mm
Hydraulic System Pressure	5076 psi	350 bar
Hydraulic Pump	Rexroth A11VLO260	
Switching Type	Hydraulic	
Hopper Capacity	21.2 ft <sup>3</sup>	600 liter
Max. Aggregate Size	1.6"	40 mm
Water Pump Pressure	290 psi	20 bar
Water Tank Capacity	17.7 ft <sup>3</sup>	500 liter



# MODEL NH36-5RZ

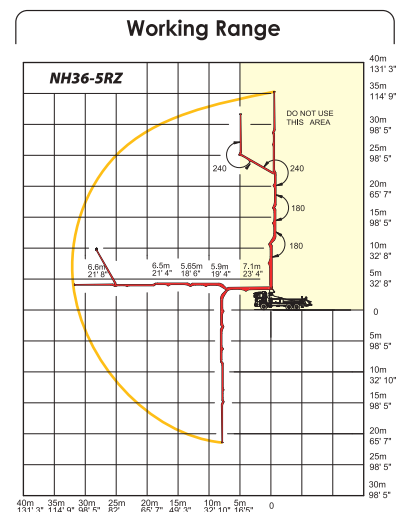


### Boom Specification

Spec	U.S.	Metric
Number of Booms	5 Sections	
Folding Type	RZ Folding	
Vertical Reach	116' 2"	35.4 m
Horizontal Reach	104' 4"	31.8 m
Reach Depth	70' 6"	21.5 m
Unfolding Height	23' 7"	7.2 m
Section Articulation	90°/180°/180°/240°/240°	
Rotation	370°	
Delivery Line	5"	125 mm
Proportional Boom	Yes	
End Hose Length	11' 6"	3.5 m
Out Rigger Spread - Front	21' 4"	6.5 m
Out Rigger Spread - Rear	21' 98"	6.7 m

### Pump Specification

Spec	U.S.	Metric
Maximum Output	209.3 yd <sup>3</sup> /h	160 m <sup>3</sup> /h
Concrete Pressure	1015 psi	70 bar
Stroke Per Min.	30	
Delivery Cylinder	Ø 9"	Ø 230
Stroke Length	6' 11"	2100 mm
S-Valve	Ø8" x Ø7"	Ø200 x Ø180 mm
Hydraulic System Pressure	5076 psi	350 bar
Hydraulic Pump	Rexroth A11VLO260	
Switching Type	Hydraulic	
Hopper Capacity	21.2 ft <sup>3</sup>	600 liter
Max. Aggregate Size	1.6"	40 mm
Water Pump Pressure	290 psi	20 bar
Water Tank Capacity	17.7 ft <sup>3</sup>	500 liter



Dimensions and weights of drawings will vary with different chassis models, specifications and local or national regulations. Any specific options, please contact [info@novaintl.ca](mailto:info@novaintl.ca)