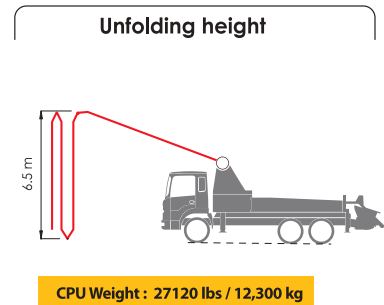
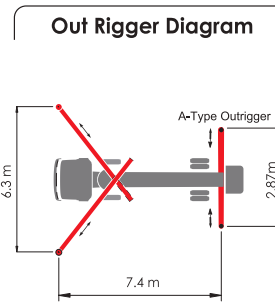
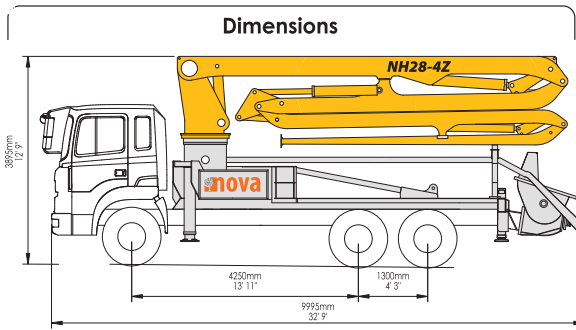


MODEL NH28-4Z

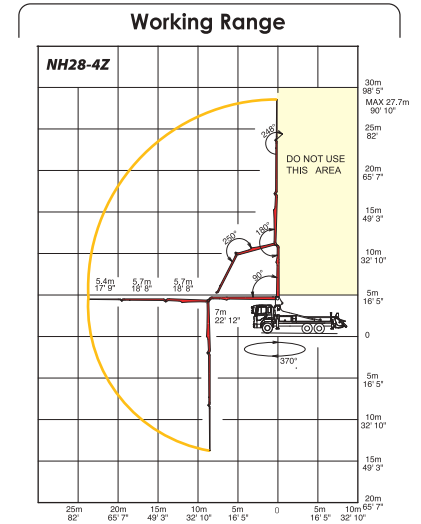


Boom Specification

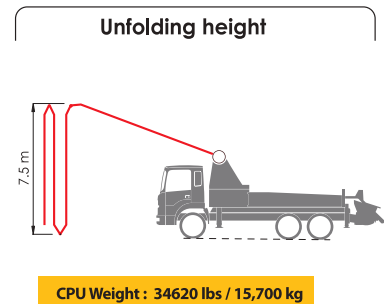
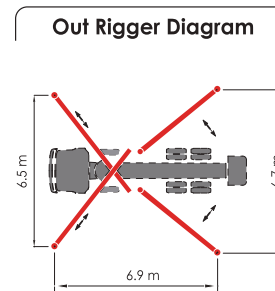
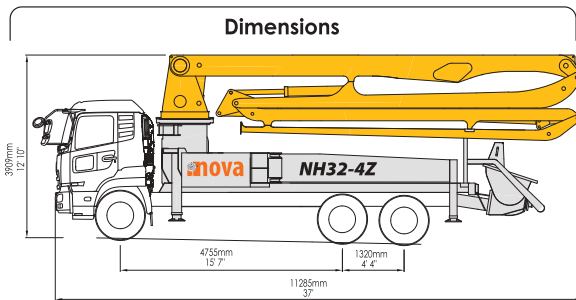
Spec	U.S.	Metric
Number of Booms	4 Sections	
Folding Type	Z Folding	
Vertical Reach	90' 10"	27.7 m
Horizontal Reach	78' 8"	23.8 m
Reach Depth	55' 1"	16.8 m
Unfolding Height	21' 4"	6.5 m
Section Articulation	90°/180°/250°/248°	
Rotation	370°	
Delivery Line	5"	125 mm
Proportional Boom	Yes	
End Hose Length	9' 10"	3.0 m
Out Rigger Spread - Front	20' 8"	6.3 m
Out Rigger Spread - Rear	9' 5"	2.9 m

Pump Specification

Spec	U.S.	Metric
Maximum Output	130.8 yd ³ /h	100 m ³ /h
Concrete Pressure	783 psi	54 bar
Stroke Per Min.	29	
Delivery Cylinder	Ø 9"	Ø 230
Stroke Length	4' 7"	1400 mm
S-Valve	Ø8" x Ø7"	Ø200 x Ø180 mm
Hydraulic System Pressure	5076 psi	350 bar
Hydraulic Pump	Rexroth A11LO145	
Switching Type	Hydraulic	
Hopper Capacity	21.2 ft ³	600 liter
Max. Aggregate Size	1.6"	40 mm
Water Pump Pressure	290 psi	20 bar
Water Tank Capacity	17.7 ft ³	500 liter



MODEL NH32-4Z

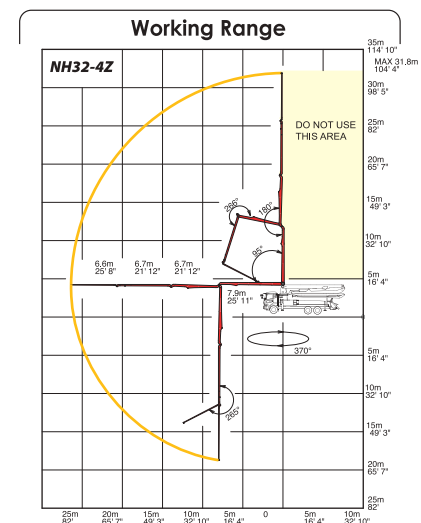


Boom Specification

Spec	U.S.	Metric
Number of Booms	4 Sections	
Folding Type	Z Folding	
Vertical Reach	104' 4"	31.8 m
Horizontal Reach	91' 6"	27.9 m
Reach Depth	71' 6"	20.8 m
Unfolding Height	24' 7"	7.5 m
Section Articulation	90°/180°/266°/65°	
Rotation	370°	
Delivery Line	5"	125 mm
Proportional Boom	Yes	
End Hose Length	9' 10"	3.0 m
Out Rigger Spread - Front	21' 4"	6.5 m
Out Rigger Spread - Rear	21' 98"	6.7 m

Pump Specification

Spec	U.S.	Metric
Maximum Output	143.9 yd ³ /h	110 m ³ /h
Concrete Pressure	1015 psi	70 bar
Stroke Per Min.	29	
Delivery Cylinder	Ø 9"	Ø 230
Stroke Length	5' 3"	1600 mm
S-Valve	Ø8" x Ø7"	Ø200 x Ø180 mm
Hydraulic System Pressure	5076 psi	350 bar
Hydraulic Pump	Rexroth A11VLO190	
Switching Type	Hydraulic	
Hopper Capacity	21.2 ft ³	600 liter
Max. Aggregate Size	1.6"	40 mm
Water Pump Pressure	290 psi	20 bar
Water Tank Capacity	17.7 ft ³	500 liter



Dimensions and weights of drawings will vary with different chassis models, specifications and local or national regulations. Any specific options, please contact info@novaintl.ca